

DDNA & AADMD 2010

Conference Brochure



Preconference May 15th, Conference May 16th - 18th in Reno, Nevada

Join us May 15th - 18th at the exciting Grand Sierra Resort in Reno, Nevada, as the Developmental Disabilities Nurses Association presents its 18th Annual Education Conference concurrently with the 7th Annual Education Conference of the American Academy of Developmental Medicine and Dentistry.

Schedule At-A-Glance

DDNA 2010
Reno, Nevada

Friday - May 14th

7:00 AM - 7:00 PM	Registration Check-In	11:30 AM - 1:30 PM	Lunch (on your own)
8:00 AM - 9:30 AM	Overview/Certification Prep Session 1	1:30 PM - 3:00 PM	Overview/Certification Prep Session 3
9:30 AM - 10:00 AM	Stretching Break	3:00 PM - 3:30 PM	Stretching Break
10:00 AM - 11:30 AM	Overview/Certification Prep Session 2	3:30 PM - 5:00 PM	Overview/Certification Prep Session 4

Saturday - May 15th

7:00 AM - 7:00 PM	Registration Check-In	11:30 AM - 12:00 PM	Pre-Conference Session 3
7:45 AM - 8:00 AM	Welcome and Opening	12:00 PM - 2:00 PM	Lunch (on your own)
8:00 AM - 9:30 AM	Pre-Conference Session 1	2:00 PM - 3:30 PM	Pre-Conference Session 4
9:30 AM - 10:00 AM	Stretching Break	3:30 PM - 4:00 PM	Stretching Break
10:00 AM - 11:30 AM	Pre-Conference Session 2	4:00 PM - 5:30 PM	Pre-Conference Session 5

Sunday - May 16th

7:00 AM - 7:00 PM	Registration Check-In	12:00 PM - 2:00 PM	Lunch (on your own)
7:45 AM - 8:00 AM	Welcome and Introduction	2:00 PM - 2:45 PM	General Session 2
8:00 AM - 8:45 AM	Keynote Session	2:45 PM - 3:30 PM	General Session 3
8:45 AM - 9:15 AM	Continental Breakfast/Exhibit Showcase	3:30 PM - 4:00 PM	Exhibit Showcase
9:15 AM - 12:00 PM	General Session 1	4:00 PM - 5:30 PM	General Session 4/Town Hall Meeting

Monday - May 17th

7:00 AM - 7:00 PM	Registration Check-In	10:30 AM - 11:00 AM	Exhibit Showcase
7:00 AM - 7:45 AM	Exhibit Showcase	11:00 AM - 12:30 PM	Breakouts 2A - 2E
7:45 AM - 8:00 AM	Welcome and Introduction	12:30 PM - 2:30 PM	Recognition Luncheon/General Membership Meeting
8:00 AM - 9:00 AM	General Session 5	2:30 PM - 3:30 PM	Breakouts 3A - 3E
9:00 AM - 9:30 AM	Exhibit Showcase	3:30 PM - 4:00 PM	Exhibit Showcase
9:30 AM - 10:30 AM	Breakouts 1A - 1E	4:00 PM - 5:30 PM	Breakouts 4A - 4E

Tuesday - May 18th

8:00 AM - 9:15 AM	General Session 6/Dr. Steve Zelinski Tribute Lecture	10:45 AM - 11:00 AM	Stretching Break
9:15 AM - 9:30 AM	Stretching Break	11:00 AM - 12:00 PM	General Session 8
9:30 AM - 10:45 AM	General Session 7	12:15 PM - 2:30 PM	Chapter Leadership Luncheon (invitation only)



Invitation to Participate

Dear Colleagues,

The Developmental Disabilities Nurses Association (DDNA) and the American Academy of Developmental Medicine and Dentistry (AADMD) invite you to participate in their joint 2010 Annual Education Conference and Exhibition at the Grand Sierra Resort in Reno, Nevada on May 14th — May 18th, 2010. This year's conference is truly an historic event for health care professionals who work in the specialty of I/DD. We will look back at the past, realistically at the present, and with hope toward the future.

The closure of Willowbrook in the 1970s was an historic event that forever changed the lives of people with I/DD. We are honored to have Dr. Michael Wilkins speak about the health care that people received in that institution and his courageous decision to unlock its doors for the world to see.

Then, the conference will focus on the realities of I/DD health care in the present. For the first time ever, at this conference outstanding national leaders in the field of I/DD and the members of DDNA/AADMD will come together to share in an historic opportunity to learn from each other and to begin a dialogue on ways in which we can work collaboratively to help meet the health needs of individuals with I/DD in all settings. On Sunday, May 16th, we will have the opportunity to learn from these leaders' knowledge and view points on major issues, such as health care disparities and the implications of national health care reform for persons with I/DD. These issues have an impact on every aspect of your daily nursing, medical, or dental practice. You must be informed! After these presentations, we will end the day with Town Hall session in which you will have an opportunity to share your concerns and ask questions.

And what about the future? To quote Walter Cronkite, "America's health care system is neither healthy, caring, nor a system." Our conference theme is "A Call to Action" because, as I/DD health care professionals, we must act to ensure that the health care system evolves to be healthy and caring for the individuals for whom we provide services. People with I/DD have a right to appropriate preventive services, prompt and accurate identification of health problems by professionals with expertise in their care, and skilled interventions that prevent needless suffering and poor quality of life. Because as the saying goes, "If you haven't got your health, you have nothing."

By popular request, we have added an extra full conference day for certification exam review on May 14th. This is a good time to reinforce your knowledge base and refresh your memory before sitting for the exam. These sessions are also ideal for nurses

who are new to the specialty and would like a comprehensive overview of I/DD nursing. Our preconference on May 15th will focus on medication administration in the community. Every nurse who has medication administration within her/his purview knows that there are plenty of issues and concerns in this area. Let's start addressing them!

We have twenty breakout sessions on May 17th that cover a wide variety of topics of importance in I/DD nursing, medicine and dentistry. And on our final conference day, we will take a few hours to reflect on the importance of humanity in what we do, overcoming challenges, and, finally, keeping our sense of humor when all else fails.

We hope that as you read through this brochure, you are as excited as we are about the outstanding opportunities for learning, networking, and maybe even having a little fun at the Grand Sierra Resort and Lake Tahoe.

See you in May!

Mary Alice Willis MSN RN
Executive Director
Developmental Disabilities Nurses Association

Matthew Holder MBA MD
Executive Director
American Academy of Developmental Medicine and Dentistry

Schedule At A Glance	Inside Front Cover
Conference Highlights	2
General Information	3
Grand Sierra Resort	4
Registration Information	5
Conference Meal Events	6
Conference Course Descriptions	7 - 14
Conference Faculty	15 - 18
Registration Form	19/20
Travel Information	Back Cover

Conference Highlights

Certification Review on Friday

By Popular Request! A Full-Day Certification Review Course on Friday

DDNA is now offering an extra conference day full of certification review courses for those preparing to take the CDDN and DDC exams. It includes an overview of I/DD nursing, epilepsy and seizures, commonly administered medications, and syndromes and conditions. It is the perfect "last minute" refresher for those who are planning to take the exam at the conference. It is also a great course for nurses who are new to the field of I/DD nursing. Taught by nurses who are experts in the specialty, it will provide a comprehensive overview to increase your knowledge and your confidence.

Pre-Conference Sessions

Nurses in our specialty know that individuals with I/DD have structural and functional body systems that can vary from those of individuals in the general population. They also have health problems specifically associated with their syndromes or conditions, e.g., GERD, thyroid disease, epilepsy, obesity, cardiovascular disease, and diabetes. Many have behavioral and mental health problems. Some have very complex health needs and are medically fragile. As a result, individuals with I/DD take, on average, 96 medications per day. We know that multiple daily medications create multiple opportunities for medication interactions, toxicities, side effects, and administration errors. We also know that I/DD nurses work within a system that has not yet fully addressed the special problems that face nurses who are trying to assure that medications are administered safely in community settings. We worry about the risks to the individuals that we serve, and the risks to our own nursing licenses. This preconference will share DDNA's new Medication Administration Task Force's work on creating a Policy Statement on Medication Administration and address questions related to the safety, legality, and appropriateness of delegation of medication administration in the community.

Conference Sessions

This year's conference brings together outstanding national leaders in the field of I/DD and the members of DDNA/AADMD to learn from each other and to begin to talk about ways in which we can work together to help meet the health needs of individuals with I/DD. On Sunday, we will focus on issues that directly affect your daily practice as a nurse, physician, or dentist, such as health care disparities and the implications of national health care reform for persons with I/DD. We will also have an opportunity to present concerns and ask questions of the speakers in a Town Hall session about the present and future of health care for persons with I/DD.

On Monday we are offering twenty breakout sessions on different topics, plus three general sessions on Tuesday, so you are sure to find something of interest. Topics include teaching adults with I/DD, end-of-life care, choking prevention and altered consistency diets, colonoscopy issues for individuals with I/DD, creating a medical/dental home, an update on autism

pharmacology, guidelines for primary care of adults with I/DD, nursing delegation, urinary incontinence, dental caries risk assessment and prevention, emergency preparedness, skin and wound care, preventing exposure to toxic environmental chemicals, writing for publication, telemedicine, forensic care of abuse survivors, improving treatment outcomes using clinical assessment tools, building a mental health model that works, depression in individuals with I/DD, stabilizing individuals for medical and dental procedures, humanity-based clinical care, a personal account of living with Lesch-Nyhan syndrome, and some good comic relief to help us remember treatment algorithms for common health problems, such as hypertension, diabetes, and hyperlipidemia.

Certification Exams

Also by Popular Request! Certification Exams By Appointment at the Conference

The certification exam has traditionally been offered on the last full day of the conference. This year, exams will be offered at your convenience by appointment on Saturday, Sunday, and Monday. You can schedule your exam without having to miss that session you really wanted to attend. Or schedule it early, and then relax and enjoy the rest of the conference. Nurses planning to sit for the exam must have applied in advance, received written qualification approval, and be pre-registered to take the exam at the conference. Instructions on how to schedule your exam at the conference will be provided with your Letter of Confirmation for the Group Exam. More information about certification can be found on the DDNA website.

Chapter Leadership Luncheon

DDNA is pleased to invite our current chapter leaders to be our guests at a special recognition and networking luncheon. As a chapter leader, you have taken on the challenge of connecting with and providing support to I/DD nurses in your chapter area. You want to find ways to contribute to your chapter's success, which can include developing and maintaining an informative website, locating and recruiting new members, providing quality education programs for I/DD nurses and the community, encouraging existing members to serve in leadership roles, and nurturing the spirit of providing mutual support. When you arm yourself with new ideas and support, finding ways to grow and vitalize your chapter can be identified and developed. During this luncheon, chapter leaders will have an opportunity to network with one another, share strategies to address common challenges, and identify solutions that will help to strengthen and improve their chapters. DDNA's Board of Directors will share their experiences with their chapters and other information of importance to chapter leaders. Each chapter can send up to two representatives, each of whom must be an elected officer of the chapter.



General Information

Continuing Education

Developmental Disabilities Nurses Association is an approved provider of continuing nursing education by the New York State Nurses Association, an accredited approver by the American Nurses Credentialing Center's Commission on Accreditation.

It has been assigned code 7AURLS-PRV-08.

To obtain CE certificates for sessions attended at the conference, go to www.ddna.org/workshops/index. To meet the requirement of the American Nurses Credentialing Center's Commission on Accreditation, you must complete an evaluation of each session in order to print out the certificate for that session. If you need help evaluating sessions or printing out your CE certificates, please contact the DDNA office.

The Conference Manual

Conference manuals will be made available in a variety of formats preceding the conference. When you register for the conference, you will be asked to select one of four options. You may choose to:

1. View and print the slides/handouts free from the DDNA website and bring them with you to the conference. You can choose to view and print them all, or only the ones for the sessions that you plan to attend.
2. Receive a free CD that contains the conference slides/handouts when you arrive at the conference and pick up your conference tote.
3. Receive a free Flash drive that contains the conference slides/handouts when you arrive at the conference and pick up your conference tote.
4. Go to DDNA's online print service at <http://stores.lulu.com/ddna>, purchase a bound paper copy of the conference manual, and bring it to the conference with you. Allow at least 3 weeks for delivery.

2010 conference manuals will be available as a free download at www.ddna.org/conference/manual, or for purchase for \$25 from <http://stores.lulu.com/ddna> beginning on Monday, April 6th

Conference Objectives

To present cutting-edge education on the most up-to-date practice issues and research regarding the specialty of developmental disabilities nursing.

To provide a forum for networking and to facilitate the sharing of information to improve nursing practice in the developmental disabilities field.

To bring together leaders and experts in developmental disabilities to engender consensus that improves the health and lives of persons with developmental disabilities.

Camera/Recording Policy

DDNA may photograph and audiotape sessions and events at the Annual Conference. Attendees acknowledge these activities and agree to allow their image to be used by DDNA in association publications, on DDNA's website, and in marketing and promotional materials. Recording during Conference sessions using personal video/audio equipment or other recording devices (i.e., cell phones, digital or film cameras or tape recorders) without prior permission from DDNA is prohibited. Conference attendees agree to conduct themselves in a manner appropriate for a gathering of health professionals. Attendees disrupting any part of the Conference, conducting themselves in a manner unbecoming a health professional, or violating these policies will be asked to leave.

What To Wear

Attire for DDNA and AADMD's Annual Education Conference and Reception is comfortable business casual (jeans are acceptable). We recommend bringing a jacket or sweater with you because temperatures in meeting rooms may vary. The outside temperatures in May in Reno average between 80°F and 50°F during the day. If you plan on visiting the Lake Tahoe area, the average is between 60°F and 30°F during the day, due to the mountainous terrain.

Special Needs

If you need special hotel room accommodations for a physical disability, please inform the hotel when you make your room reservation. If you need a wheelchair, special seating arrangements, or a note taker during the conference, please email DDNA in advance of the conference. Requests for vegetarian meals should be made to the serving staff at meal time.

Sponsor Exhibits

The Sponsor Exhibit area is located near the registration area at the entrance of the conference area. Visit the exhibits and speak with representatives from companies that provide products of interest to developmental disabilities nurses, physicians, and dentists. We thank all our sponsors and exhibitors for their support of DDNA, and encourage you to meet with them and gather information about their products and services to take back to your agencies or facilities.



Grand Sierra Resort

About The Resort

The Grand Sierra Resort is located in the heart of Reno/Tahoe - America's Adventure Place. The Grand Sierra is northern Nevada's most complete resort destination with nearly 2,000 guest rooms and suites. You can relax pool side at the The Beach, work out at the Health Club, be pampered at the Spa, enjoy fabulous entertainment, and eat delicious meals at the many wonderful restaurants at the Resort. Enjoy a luxurious, yet amazingly affordable stay! The Grand Sierra is pet-friendly as well, but make sure to tell the hotel when you register that are bringing along a pet.

NOTE: This hotel is connected directly to the conference area.

Hotel Registration

The Grand Sierra Resort is offering DDNA Conference attendees two discounted group room rates: the luxurious Summit Suites for \$120 per night and the Grand Sierra Guestrooms for \$79 per night, available only to registered attendees and their guests during the 2010 Educational Conference.

If you wish to experience the highest levels of suite accommodations and service in Reno, stay in the luxury Summit Suites. Indulge yourself in custom furnishings, complete with a contemporary look and feel. These accommodations include a butler pantry with stainless steel microwave and mini refrigerator, spa inspired shower with mosaic tile floor, flat screen TVs, and Italian custom leather furniture, as well as the standard amenities available throughout all the guestrooms, such as hair dryer and iron. The discounted rate for the Summit Suites is \$120 per night.

Budget a little tighter this year? For comfort at a reduced price, the Grand Sierra Guestrooms are a great value. Many of these rooms offer "connectors," so you can accommodate a group, if you are traveling with your colleagues. These rooms are equipped with a hair dryer, coffee maker, and an iron with ironing board. There is NO microwave or minifridge in these rooms. These rooms are available for \$79 per night.

Discounted room rates are available for the nights of May 14th through May 18th. Reservations must be made before April 27th by 6pm ET for the discounted registration rate. We recommend that you register for your hotel room as soon as possible, because the Grand Sierra Resort is a popular destination. To receive the room discount, call 800-648-5080 and tell the reservations clerk that you are with the DDNA 18th Annual Education Conference.

Hotel Shuttle and Parking

All self-parking is complimentary at the Grand Sierra Resort. Valet parking is available for a nominal charge. For current valet rates, please check with the resort prior to your arrival. Conference registration fees do not include valet parking fees.

Hotel Check-In/Check-Out

Hotel check-in time is 3 PM. Check-out time is 11 AM. If you plan to leave just after attending sessions on the same day, the Bell Desk can arrange to store your baggage for you.

Transportation From The Airport

The Grand Sierra Resort offers free shuttle service to and from the Reno-Tahoe International Airport for *no charge*. The Shuttle leaves from the exit located at the far end of baggage claim every 15 and 45 minutes past the hour daily between 5:15 am and 11:45 pm.

Attractions and Entertainment

There are so many things to do at the Grand Sierra, you'll run out of days before you run out of fun. Did you know there's a *50-lane bowling alley* in the hotel? Wow! There's also a movie theatre, miniature golf, go karts, driving range, amusement park, and video arcade. - and that's just the beginning. If you like live music, you can see concerts by the world's top entertainers. View the schedule at www.grandsierraresort.com/entertainment/calendar/. If you enjoy dancing, you'll enjoy the fabulous night clubs located throughout the resort.

Looking for adventure? Want to cruise beautiful Lake Tahoe, go rafting, or sightseeing? Shopping on your mind? Plan your activity now by visiting the Grand Sierra Adventure website at www.grandsierraresort.com/activities/grand-sierra-adventures/ for a full list of fun activities throughout the Reno/Lake Tahoe area.



Registration Information

Registration Dates

Early bird registration ends April 10, 2010. Regular registration must be received or postmarked between April 11 and April 30. Late registration fees apply on or after May 1. Onsite registration will be available at the conference. *No unpaid purchase orders will be accepted at onsite registration.*

How to Register

1) Website: DDNA offers a quick and convenient method of registration at www.ddna.org/pages/conference. Credit card payment must be used when registering online. Visa, MasterCard, and American Express are accepted. Registrations submitted online are not considered complete until payment is processed.

DDNA members: *log in with your username and password before registering, and you will automatically receive the discounted member registration rate.*

If you are not a member, but would like to become one and receive the discounted member conference registration rate, apply for membership first at: www.ddna.org/pages/membership. Once your registration is complete and you have created a username and password, log in and then register for the conference. If you need help, please call the DDNA office at (800)888-6733.

If you are an AADMD member, you must register by mail or fax. See directions below for AADMD Registrants.

2) Fax: Complete the registration form located in the back pocket of this brochure and fax it to the DDNA office at (407) 426-7440. For your financial security, do not include credit card information on the faxed form. Be sure to include a phone number where you can be reached, and we will call you for your credit card information. If you are ordering box lunches, make sure to add the cost of the lunches to your conference payment.

3) Mail: Complete the registration form and mail it along with a check in US\$ made payable to DDNA to this address: DDNA 2010 Conference, PO Box 536489, Orlando, FL 32853-6489. If you are ordering box lunches, make sure to add the cost of the lunches to your conference payment.

AADMD Registrants

AADMD members: Please complete both sides of the AADMD Registration Form included with this brochure. Mail it to: AADMD 2010 Conference, PO Box 536489, Orlando, FL 32853-6489. Please include a check for the discounted AADMD member registration rate or the non-member registration rate, as appropriate. If you would prefer to fax, see the fax instructions above.

Registration at the discounted AADMD member registration rate will not be considered complete until AADMD membership is verified. If this conference brochure does not contain an AADMD registration form, email admin@ddna.org to receive one by email.

Group Registrations

By check: If you are registering more than one person for the conference, you must mail a separate completed registration form for each person. Photocopied registration forms are accepted.

By credit card: If you would like to use a business credit card to register multiple people for the conference, you must mail or fax a separate completed registration form for each person. Photocopied registration forms are accepted. Then call DDNA with the credit card information.

Agency or State Purchase Orders

Purchase orders are expected to be paid in advance of the conference. DDNA will invoice immediately upon receipt of a purchase order and will register attendees based on the purchase order. A separate completed registration form for each attendee must be included with the purchase order. Photocopied registration forms are accepted. The conference Cancellation Policy applies for each attendee registered by state or agency purchase order; however, an agency or state may send a substitute attendee, if necessary.

Cancellation Policy

Registrants cancelling by April 30, 2010 will receive a full refund minus a \$45 administrative fee. Cancellation by May 5, 2010 - 50% of fees paid. No refunds after midnight ET on May 5, 2010.

Registration Desk

Name badges and conference materials will be distributed at the registration desks located near the conference area. The registration desk will be open May 14th, 8AM to 8:30AM and 3PM - 7PM, May 15th, 7AM - 7PM, May 16th-17th, 7AM - 5PM, and May 18th, 7AM - 12PM (subject to change).

Conference Meal Events

Changes in Breaks and Meals

Please be aware that food breaks and meals have changed this year.

At this year's conference, your registration fee will include the following two (2) meal events:

- Continental breakfast on Sunday, May 16th
- General Membership and Recognition Meeting luncheon on Monday, May 17th

All other breaks and meals are "on your own," which means you may purchase boxed lunches or choose other dining options. See below for details.

Purchasing Boxed Lunches

If you would like the convenience of a boxed lunch for Saturday, May 15th and/or Sunday, May 16th, you must purchase it when you register for the conference. Each boxed lunch costs \$25, which is the actual cost to DDNA from the Resort. The boxed lunch includes a sandwich, a side, dessert, and a beverage. There will be several varieties available at the conference, including a vegetarian option.

Both DDNA's online and mail-in conference registration forms provide a place to indicate whether you wish to purchase boxed lunches. When mailing in your registration, please remember to add the cost of the boxed lunches to your conference check payment to prevent delay of your conference registration. If you have registered a guest and he/she would like boxed lunches, please remember to add the additional boxed lunch fees for your guest.

Dining at the Resort

The Grand Sierra Resort offers superb dining to fit every taste - from an upscale steakhouse to family friendly restaurants and convenient dining. You can enjoy fine dining with Reno's first Celebrity Chef, Charlie Palmer. Charlie Palmer Steak features artisan meals and a trademark eclectic wine collection. You can also enjoy Charlie Palmer's premiere seafood restaurant, Fin Fish, featuring a premium raw bar and fresh fish. If you like fine Italian food, spend an evening at Briscola, where you can enjoy a selection of pasta and other dishes at affordable family prices. If you prefer a more casual dining experience, try the buffet at The Lodge, the 2nd Street Express deli, Café Sierra, or 50's style burgers at Johnny Rockets. Pick up a quick sub or pizza slice at Port of Subs and Round Table Pizza. There's even a Starbucks for your morning coffee break.

You will be pleased to know that all hotel rooms provide coffee/tea and a

coffee maker, and that if you have upgraded to the Summit Suites, they also include a butler pantry with a microwave and mini-refrigerator. So you may choose to bring food with you to the Resort or make a quick run out to a grocery store.

Other Dining Options

Please note that we are allowing two hours for lunch each day. This will give you plenty of time to network and enjoy a meal in any of the many restaurants in the Grand Sierra Resort, or to go to a fast food or dine-in restaurant within driving distance.





Course Descriptions

Friday, May 14th

8:00AM - 9:30AM, Overview/Cert. Prep 1

Overview of I/DD Nursing - Identifying the Health Support Needs of Persons with I/DD

S. Diane Moore, BSN, RN, CDDN and Kathleen A. Brown BA, RN, CDDN

Providing quality nursing support to persons with I/DD requires the nurse to identify the health needs of the individual and to develop an effective intervention plan. As in all healthcare settings, nursing care for persons with I/DD must be provided in accordance with the nursing process and established standards of nursing care. This session will discuss the nurse's role in the support plan and as a member of the IDT, and will review the Nursing Process and the Aspirational Standards of DD Nursing Practice. This session will focus on common health issues faced by persons with I/DD and explore methods to determine health needs and develop effective intervention strategies. The session will include a review of the nursing process and discuss ways to assure that nursing care is provided in accordance with the Standards of I/DD Nursing Practice. Also discussed will be nursing concerns surrounding the use of unlicensed direct support personnel and barriers to positive health outcomes, with a focus on identifying effective strategies to address these challenges. **(1.5 CE)**

10AM - 11:30AM, Overview/Cert. Prep 2

Seizures and Epilepsy: A Challenge for All

Rita Pobanz, MSN, RN

Epilepsy challenges both individuals and healthcare providers. The epilepsy prevalence rate in persons with I/DD is approximately 25%, and it is frequently more severe than in the general population. Identifying seizure activity, assessing treatment effectiveness, and providing emotional and physical supports are essential nursing services. At the end of this presentation, you will be able to: describe major seizure and epilepsy classifications, along with co-morbid conditions associated in persons with intellectual and developmental disabilities; identify diagnostic and treatment strategies; and discuss the impact of epilepsy on quality of life. **(1.5 CE)**

1:30PM - 3PM, Overview/Cert. Prep 3

An Overview of Medications Commonly Used in I/DD Nursing

Nanette Wrobel, BS, RPH

This session will focus on the medications commonly used to treat the disease states most often found in individuals with I/DD. Medications for the following clinical syndromes will be discussed: epilepsy, neurobehavioral issues including aggression, self-injurious behavior, anxiety, depression, psychosis, sleep disorders and dementia, GERD, osteoporosis, urinary continence, constipation, arthritis, osteoporosis and spasticity. Indications, drug interactions, common side effects and dosages will be discussed for each of these disease states so that the nurse may be better prepared to address common usages and concerns for these medications as they are used for the clients we serve. **(1.5 CE)**

3:30PM - 5PM, Overview/Cert. Prep 4

An Overview of Syndromes and Conditions

Terry Broda, RN, BScN, NP-PHC, CDDN

This session will provide an overview of 10 different genetic syndromes: Down syndrome, Fragile X, Williams, Angelman, Prader-Willi, Smith Magenis, Cornelia de Lange, Rett, Tuberous Sclerosis, and Velocardiofacial (22q-) syndrome. Included will be the screening measures necessary to identify comorbid health problems associated with these genetic syndromes. Also included in this session will be helpful strategies for addressing these comorbidities, as well as key areas of knowledge related to syndromes and conditions that would be expected of a certified developmental disabilities nurse. **(1.5 CE)**





Course Descriptions

Saturday, May 15th

8AM - 9:30AM, Pre-Conference Session 1

Medication Management — It Really is a Mine Field!

S. Diane Moore, RN, CDDN, President, DDNA Board of Directors and Kathleen A. Brown, BA, RN, CDDN, President-Elect, DDNA Board of Directors

Medications for individuals with I/DD are often managed by unlicensed direct support personnel without standardized criteria or training and with limited nursing involvement or oversight. This approach to medication management places nurses and agencies at risk for practicing outside the established standards of care and increases liability for both. This session will identify concerns with the existing approach to medication management for persons with I/DD and explore strategies to address the issues surrounding this critical area of support. During the session, DDNA will present newly-developed criteria and parameters for helping to assure safety in medication administration for the person with I/DD and for minimizing practice liability through the use of standardized medication management protocols. **(1.5 CE)**

10AM - 11:30AM, Pre-Conference Session 2

Navigating Through the Mine Field: Establishing Standardized Procedures for Medication Management

S. Diane Moore, RN, CDDN and Kathleen A. Brown, BA, RN, CDDN

Safe, effective medication management is a fundamental need for persons with I/DD and agencies and nursing staff must comply with program regulations and nursing practice standards while addressing this essential need. Using a standardized approach to medication management helps assure compliance with related standards and helps limit liability for the nurse and the agency, while facilitating safe medication administration for the individual. This session will identify procedures needed to assure safety and move to establishing a standardized approach to medication management for this vulnerable population. During the session, the presenter(s) will outline appropriate assessment processes and effective training strategies for the person served, and will establish core components of DSP education and training. **(1.5 CE)**

11:30AM - 12PM, Pre-Conference Session 3

What To Do If a Mine Explodes: Protecting Yourself and Your Nursing License in the Event of a Medication Error

Michael R. Willis, RN, MBA, JD, LLM

When a medication error occurs, the nurse needs to be prudent in documenting the event, clearly communicating with his/her employer, and in giving concise and accurate statements if called to testify at deposition or trial. This session will address key questions: Who is ultimately liable? When will an injured party sue the nurse individually,

apart from the facility/employer/agency? When medication is administered by direct support personnel, is the nurse "off the hook" because the personnel completed approved or statutorily recommended training? Must the nurse know with certainty and personally verify that personnel are competent, have appropriate experience, and can carry out the applicable protocols? Who is responsible for personnel selection, retention and training? When should a nurse document concern about delegation perceived to be unsafe, or even refuse to participate? Should the nurse consider purchasing malpractice insurance? What should the nurse do if she/he is disciplined or even sued for a delegated or undelegated medication error? **(.5 CE)**

2PM - 3:30PM, Pre-Conference Session 4

Life in the Trenches: Examining Real-Life Medication Management Programs

Sharon Oxx, RN, CDDN, Kathleen A. Brown, BA, RN, CDDN, and Richanne Cunningham, RN, CDDN

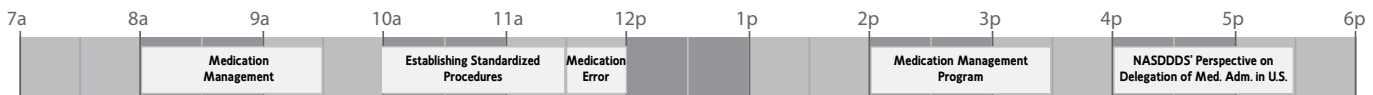
This session will review medication management programs and strategies used in three areas of the country, examining the principles and structures that contribute to each program's success. The session will include information on important principles to remember when developing these programs and will review essential components, including assessment, training, and competency verification. Participants will have the opportunity to see how fundamental medication management principles are put into day-to-day practice and explore some of the challenges we still face in this critical area of support. Leadership from the National Council of State Boards of Nursing will be present to share the Council's perspective and guidance on important regulatory issues related to the nurse's role in medication administration in the community and the Council's efforts to assure the safety of medication administration for individuals with I/DD who reside in community settings. **(1.5 CE)**

4PM - 5:30PM, Pre-Conference Session 5

NASDDDS' Perspective on Delegation of Medication Administration in the United States

Nancy Thaler, MS, HOS, Executive Director of the National Association of State Directors of Developmental Disabilities Services

Most people with I/DD live in the community with their families, some live independently in shared living arrangements, and some live in staffed group homes. Quality generally is defined in terms of life outcomes, with the goal of people with I/DD having the same routines, rhythms and experiences as their peers without disabilities. A large percentage of people with I/DD have medical conditions; many take medications necessary to treat their conditions. The administration of medications requires competencies and oversight, as well sensitivity to people's life styles and freedom of movement. Different states have approached the delegation of the administration of medications in different ways, but all states must attend to issues of safety and maintaining good health. The delegation of medication administration has led to a different and generally expanded role for nurses to include consumer and staff training, oversight and health monitoring. **(1.5 CE)**





Course Descriptions

Sunday, May 16th

8AM - 8:45AM, Keynote Session

Willowbrook: Whistleblowing in the Wind

Michael Wilkins, MD

We are honored and privileged this year to have Dr. Michael Wilkins as our Keynote Speaker. He was the "whistleblower" at Willowbrook. His actions in bringing public attention to the abysmal conditions endured by "inmates" at Willowbrook have forever changed the care of people who have intellectual and developmental disabilities.

People with I/DD often become victims of oppression. They and their caregivers and family members sometimes find themselves having to speak and act against oppression. During the days of the large institution, the oppression was visible, but not recognized by most caregivers and other employees, and even by many family members. There was a group at Willowbrook--the world's largest institution for people with I/DD - who in 1972 began first to challenge the dangerous conditions within the facility, then to question whether large institutions are appropriate. The group included family members, professional and nonprofessional staff members. This presentation describes the origin of the "Willowbrook Wars" in the conscience of the members of the group and a brief description of what developed. **(.75 CE)**

9:15AM - 12PM, General Session 1

Challenges and Opportunities for Collaboration in Healthcare for Persons with I/DD

Steven M. Eidelman, MBA, MSW, George Jesien, PhD, and Nancy Thaler, MS, HOS

Organizations that address issues of importance to persons with I/DD each have their own purpose and perspective, but all share the goal of supporting people with disabilities so they can live and fully participate in all aspects of community life. Recognizing that the power for positive change comes from cooperative and collaborative relationships, this session brings together top leaders in the field of I/DD to share their organizations' perspectives on health care disparity issues that affect persons with I/DD and how these issues relate to policy making on a national level. What are the challenges in effecting meaningful change to ensure that persons with I/DD receive optimal health screening and preventive care, that their daily medications and treatments are administered correctly, and that their health problems across the lifespan are promptly identified and treated by nurses, physicians, and dentists who are knowledgeable in the care of persons with I/DD? What opportunities do we have, as specialists in the nursing, medical, and dental care of persons with I/DD, to support and contribute to positive change? At the end of the day, there will be time for audience dialogue with the speakers, so bring your questions and concerns. **(.275 CE)**

2PM - 2:45PM, General Session 2

The Implications of National Health Care Reform for Individuals with DD

Robert Gettings, MPA

As this conference brochure is being put together, President Obama and Congress

are in the final stages of formulating legislation to restructure the American health care system. This legislation, which, at the time of this printing, was expected to be enacted into law before the end of 2009, will mandate sweeping changes in the financing and delivery of health care services in the United States. This session will explain the global aims of the national health reform measure and highlight the various ways in which the legislation is likely to alter the delivery of acute health and long-term services to individuals with I/DD. This presenter also will discuss the implications of the legislation for health and allied health professionals and offer insights into the Obama Administration's plans to institute reforms. **(.75 CE)**

2:45PM - 3:30PM, General Session 3

Health Disparities and Developmental Disabilities

Gloria Krahn, PhD, MPH

People with I/DD experience a cascade of disparities in health and health care that have largely gone unrecognized. This session will consider the questions: What's the disability? What's health disparity? What's disability? And who's monitoring the health of people with I/DD as a population? Research indicates that people with I/DD, as a group, are more likely to have complex health conditions, less likely to have their health needs recognized, have less access to quality health care and fewer health promotion opportunities. While the health of the general population is routinely monitored through national surveys, the health of Americans with ID is neither systematically monitored nor reported. A framework for addressing these health disparities can be found in two Surgeons General reports (2002, 2005) and a recent Institute of Medicine (IOM) report (2007). **(.75 CE)**

4PM - 5:30PM, General Session 4

Panel Discussion and Town Hall Meeting

Steven M. Eidelman, MBA, MSW, Robert Gettings, MPA, George Jesien, PhD, Seth Keller, MD, Gloria Krahn, PhD, MPH and S. Diane Moore, BSN, RN, CDDN

This session will bring together today's speakers for continued discussion of disparities, national and state policies related to the health care of persons with I/DD, and what we can do - as the expert nurses, physicians, and dentists - to promote awareness of what is and is not working in the healthcare system. Also discussed will be how we, as the experts in I/DD healthcare, can help to assure that all individuals with I/DD across the lifespan have access to qualified health professionals, receive preventive care, are assessed routinely and PRN for health problems, and receive appropriate care and follow-up when health problems arise. The Town Hall will be a moderated question and answer session. We encourage you to submit your questions for this panel at the DDNA Board of Director's table. **(1.5 CE)**



Course Descriptions

Monday, May 17th

8AM - 9AM, General Session 5

Cerebral Palsy and Transition: A View From Both Sides

Hank Chambers, MD

Transitioning individuals who have cerebral palsy and other disabilities from pediatric to adult health care services is a challenge in most areas of the country. Dr Chambers is a pediatric orthopedic surgeon who also has a Lifespan Clinic that serves more than 2200 patients with all types of disabilities. He is also the father of a 27-year-old son with total body involvement cerebral palsy. His presentation will provide an update on new developments in the etiology, definition, classification and treatment of children and adults with cerebral palsy. He also will share his research and personal experiences with transition and adult care issues. **(1 CE)**

9:30AM - 10:30AM, Breakout 1A

A Transformation Process: Nurses' Experience Teaching Adults with Developmental Disabilities

Ginny Focht-New, PhD, PMH-CNS, BC, CDDN

Adults with intellectual/developmental disabilities (I/DD) have both common and complex health conditions and an increased risk for morbidity and mortality. With the focus on deinstitutionalization, the need for health services, resources, and particularly education has shifted to community settings. A qualitative, descriptive study was conducted interviewing twenty-three nurses who provide health teaching to this adult population. In this session the audience will learn about a variety of health teaching experiences, as well as about effective teaching activities for conveying health information to adults with varying impacts of I/DD. The findings of the study focus on the transformative processes of both the teachers and learners in health teaching. **(1 CE)**

9:30AM - 10:30AM, Breakout 1B

A Collaborative Approach to End of Life Care for Individuals with Developmental Disabilities

Sherrill Hayter, RN, CDDN

A community hospice agency, the Department of Developmental Disabilities Northeast Region Area Office Nurses, and a community pharmacy developed a collaboration to address end-of-life needs for a large group of underserved individuals with I/DD who were dying without the benefits of hospice care. Hospice care in the group home setting needs to be available and set up so that the individual, family, support staff, hospice staff, DDS and provider agency are all comfortable with the choice and process. This workshop will identify the population served, their living situations, and explain the collaborative process. Also discussed will be obstacles encountered, their resolution, forms developed, trainings provided for DDS and hospice staff, and how MAP regulations were amended for hospice care in Massachusetts. Success stories will be shared, as well as updates on progress over the past 6 years. **(1 CE)**

9:30AM - 10:30AM, Breakout 1C

Choking Prevention and Altered Consistency Diets

Denise Schuffman, RN, RD, LD

Choking Prevention and Altered Consistency Diets Training provides an understanding of choking risks and prevention strategies for persons with I/DD, who have a higher incidence of dysphagia leading to negative health consequences. Deaths and negative outcomes from choking can be reduced with proper screening, education and implementation of a plan. Caregivers with proper training are more likely to start the screening process and report early changes in an individual before a life-changing event occurs. This overview of physical and behavioral factors that lead to an increased risk of choking includes strategies for reducing choking risk and implementation of altered consistency diets. Persons with I/DD benefit from a more pleasurable meal time experience with reduced risks. This presentation will also discuss how to successfully develop and implement a feeding protocol. **(1 CE)**

9:30AM - 10:30AM, Breakout 1D

Colonoscopy in Adults with I/DD, with Special Emphasis on Colorectal Cancer Screening and Preparation Issues

Leonard S. Fischer, MD

Colorectal cancer is common in adults. It can be treated and cured if detected early, but has a high mortality rate if diagnosed after overt symptoms have developed. Because of this, screening of adults by colonoscopy is recommended for early detection of cancer and precancerous colon lesions. How do these screening recommendations apply to I/DD adults? Are the potential benefits and risks of screening similar to the general population, or are there problems unique to persons with I/DD. What about colonoscopy efficacy and safety in general for person with I/DD? Using actual case histories and a retrospective review of results, this presentation will attempt to answer these questions, and provide recommendations for colorectal cancer screening and surveillance, as well as general colonoscopy and preparation recommendations for persons with I/DD. **(1 CE)**

9:30AM - 10:30AM, Breakout 1E

The Health Home - A Health Practice Model to Improve Total Health for People With Special Needs

Jack Dillenberg, DDS, MPH

Integration of medicine and dentistry go beyond looking at pathologies in the oral cavity as markers for systemic illness. Oral health care professionals have shown to be a resource for the identification of individuals at risk for many chronic diseases, such as cardiovascular disease and diabetes, by screening for high blood pressure, cholesterol, and plasma glucose levels. This integration is especially critical in populations with special needs. Deinstitutionalization and the movement towards community-based services have left many individuals with I/DD without a medical home. At the same time, pediatricians have started to integrate oral health exams and provide fluoride varnish to children who have yet to find a dental home. This may provide a model for further integration of care for persons with I/DD. This presentation will address the advantages and disadvantages associated with bringing the medical home and dental home closer in order to provide patient-centered, family-oriented, comprehensive and coordinated preventive health care. **(1 CE)**



Course Descriptions

Monday, May 17th

11AM - 12:30PM, Breakout 2A

Update on Psychopharmacological Approaches to Individuals with Autism and Related Disorders

Jarrett Barnhill, MD, DFAPA, FAACAP

People with autism and related disorders are often medicated for behavioral issues. This session will review the basic components of functional behavioral analysis, the neurobiological aspects of autism, and key features in the psychiatric diagnosis of co-morbid conditions. It will also review the neurochemistry of autism and the biological underpinnings of challenging behaviors, as well as their relationship with psychiatric disorders. Current evidence-based and newer pharmacological strategies for treatment will be discussed, as well as their side effects and how these influence treatment monitors. **(1.5 CE)**

11AM - 12:30PM, Breakout 2B

Canadian Consensus Guidelines for Primary Health Care of Adults with Developmental Disabilities, EH!!

Shirley McMillan RN, BScN, MN, CDDN and Tom Cheetham, MD, CCFP

Individuals with I/DD are often perceived by health professionals as being complicated and their health disparities have been well documented. One of the main reasons is lack of education and clinical exposure for health care providers. Primary Care Consensus Guidelines for Adults with DD were developed by an interdisciplinary group of clinicians and researchers from the Canada, the U.S, Australia, and the U.K. to provide a framework for providers to help them provide optimal health care.

This session will present an overview of the Guidelines and a systematic approach to follow them in offering health care services to adults with I/DD. Attendees will be among the first to review tools that were developed specifically to accompany the Guidelines to help providers in working through complicated cases, for example, in crisis situations with complex medical, behavioral and psychiatric issues. **(1.5 CE)**

11AM - 12:30PM, Breakout 2C

Nursing Delegation: What's It All About?

Rita Pobanz, RN, MSN

Nurses are responsible for nursing outcomes. It does not matter whether nurses perform the tasks themselves or delegate the implementation to an unlicensed support person. Nurses still retain responsibility for the result of nursing actions. Delegation of nursing tasks to other than licensed nurses is a reality in today's healthcare environment. Consequently, it is essential that licensed nurses be able to articulate those actions that are essential to nursing outcomes. At the end of this presentation, participants will be able to differentiate between nursing outcomes, nursing delegation, and the responsibilities of other members of the healthcare team. **(1.5 CE)**

11AM - 12:30PM, Breakout 2D

To Pee or Not to Pee: That is the Question

James Powell, MD

Individuals with I/DD often present with various type of "urinary accidents." It becomes difficult to determine whether the origin is medical, behavioral or a combination of both. This talk will explore the common causes of incontinence for both men and women and explain ways that the behavioral and medical teams can work together to improve the quality of life for the individuals we serve. **(1.5 CE)**

11AM - 12:30PM, Breakout 2E

Dental Caries Risk Assessment and Prevention

Allen Wong, DDS, FACD, DABSCD and Karen A. Raposa, RDH, MBA

Individuals with I/DD are more vulnerable to caries and periodontal disease, and their oral health is an often overlooked and underestimated part of overall health. It is important to assess for caries and help institute prevention protocols. CAMBRA (Caries Management By Risk Assessment), a new model for understanding and controlling risk factors for dental disease, will be presented. Also presented will be practical solutions with tips and techniques for proper applications of home care devices and therapeutics, including over-the-counter products. Behavioral supports that may reduce resistance by the individual with I/DD to these applications will also be discussed. **(1.5 CE)**

7a	8a	9a	10a	11a	12p	1p
	Cerebral Palsy and Transition		Teaching Adults with I/DD	Psychopharmacological Approaches		
			Coll. Approach to End of Life Care	Canadian Consensus Guidelines		
			Choking Prevention	Nursing Delegation: What's It All About?		
			Colonoscopy in Adults with I/DD	Pee or Not To Pee		
			Health Practice Model	Dental Caries Risk Assessment and Prevention		



Course Descriptions

Monday, May 17th

2:30PM - 3:30PM, Breakout 3A

Emergency Preparedness for the I/DD Community
Doreen Canton, BS, RN, CDDN and Lucien Canton, CEM

The complexity of modern society has given rise to increasing vulnerability to natural disasters. The impact of these disasters falls hardest on those who are the least able to care for themselves and the most likely to be marginalized by responders. This presentation will provide information on what really occurs in disasters, what we can expect from the government response, and methods for helping to prepare the I/DD community to cope with these emergencies. **(1.5 CE)**

2:30PM - 3:30PM, Breakout 3B

SOS: Save Our Skin
Jennifer R. Wilhelmy RN, DCN, CNP

The skin is the largest organ in the body and the first line of defense for the body. Individuals with I/DD are at higher risk for skin breakdown related to pressure and incontinence. This presentation will discuss elements of good skin care, pressure ulcer prevention and treatment, and incontinence dermatitis prevention and treatment. Specific diagnoses, such as cerebral palsy and spina bifida, and skin care will be addressed. Case studies with photographs will be presented. **(1.5 CE)**

2:30PM - 3:30PM, Breakout 3C

Becoming a Leader in Environmental Health Issues Affecting Persons with I/DD: Preventing and Reducing Exposure to Toxic Chemicals

J. Carolyn Graff, PhD, RN

Environmental health issues affecting persons with developmental disabilities may be misunderstood, misinterpreted, and mislabeled as related to a person's disability. Exposure to toxic chemicals in everyday products, food, drinking water, and the air can create or increase risk for health problems. The links between the environment, health, and behavior of persons with developmental disabilities will be discussed along with the critical role of nurses in preventing and reducing exposure. **(1.5 CE)**

2:30PM - 3:30PM, Breakout 3D

You Can't Edit a Blank Sheet of Paper: Writing for Publication
H. Barry Waldman, DDS, MPH, PhD

"Front line" nurses, physicians, dentists and other health providers of service for individuals with I/DD amass years of "how-to-do" knowledge that can facilitate the efforts by their colleagues. Writing and publishing about these insights and experiences is not beyond the capacity of most front-line providers. This session will help attendees to identify the key steps in the process of organizing and preparing a manuscript for submission and eventual acceptance and publication in a range of journals. **(1.5 CE)**

2:30PM - 3:30PM, Breakout 3E

Telemedicine and Teledentistry: A Vehicle for Access
Allen Wong, DDS, FACD, DABSCD, Gerri Collins-Bride, RN, MS, ANP, and Lisa Itaya, DDS, FAGD

The growing problem of access to care is nationwide. Having experts at hand to give opinions and provide comprehensive medical and dental evaluations for persons with I/DD can be challenging. Technology has come a long way in many aspects. This program will present some creative and efficient uses of telemedicine and teledentistry. A brief overview of how the programs were established, what is needed, some of the concerns, and learning lessons of the programs will be discussed. **(1.5 CE)**

4PM - 5:30PM, Breakout 4A

Recognizing the Forensic Needs of Survivors with Disabilities
Janean Fossum, BSN, RN, CDDN

This session will describe ways to recognize signs of abuse in individuals with I/DD. It will also review the statistics of abuse, the wounds of abuse commonly seen, the proper documentation to use, and the behaviors seen in the victim and perpetrators. **(1.5 CE)**



Course Descriptions

Monday, May 17th

4PM - 5:30PM, Breakout 4B

Treatment Outcomes Assessment and How to Improve Patient Care

Seth Keller, MD, Phillip May, MD, and Robin May, RN, MSN, ANP-C, CDDN

Adults with I/DD often have complex medical issues. The healthcare team spends a lot of time and resources trying to reduce and improve the various health problems. Tests, clinical evaluations, medications, and documentation are used in abundance, but does this make our patients better? There are no clear standardizations for many of the frequently encountered health difficulties in this population. This lecture will review the problems in healthcare outcome assessments. The speakers will demonstrate how outcomes can be measured by using various objective clinical assessment tools. These approaches will demonstrate how staff can be educated to provide a high level of care so adults with I/DD will have a better quality of life. **(1.5 CE)**

4PM - 5:30PM, Breakout 4C

Building a Mental Health Model That Works - An Ongoing Process

Celia Moreno, MD, Jean McMaster, MFT, and Doreen Canton, BS, RN, CDDN

People with I/DD often have difficulty in accessing mental health services in the community, including psychiatrists and therapists. We frequently see undiagnosed or misdiagnosed conditions that are left untreated or treated with heavily sedating medications. This leads to the inappropriate use of police and Psychiatric Emergency Services to provide crisis management when situations get out of control. This presentation includes an overview of a community coming together to overcome the barriers and work collaboratively to ensure comprehensive services for the individual to diagnose and treat mental health needs. Audience members will be able to identify systems barriers and how to work around institutional mindsets to create a more open and collaborative model integrating mental health, medical and dental services. **(1.5 CE)**

4PM - 5:30PM, Breakout 4D

Depression in Persons with I/DD

Nanette Wroebel, BS, RPH

The diagnosis and treatment of depression in individuals with I/DD can be complex. This session will review the etiology, incidence, and signs and symptoms of depression related to this population. It will also provide an in-depth discussion of the various classes of antidepressant medications available, which will better equip healthcare professionals to understand medication options. Because individuals with I/DD commonly take many other types of medication, this session will review possible drug interactions that may occur. Also discussed will be how best to monitor for antidepressant medication effectiveness and for any potential side effects of these pharmacological agents.

4PM - 5:30PM, Breakout 4E

Medical/Dental Procedures and Stabilization Protocols in Persons with I/DD

Rick Rader, MD

Individuals with I/DD may need to be physically stabilized for various medical or dental procedures because of disruptive behavior, or to prevent injury to themselves or others. This presentation will address the use of "medical stabilization interventions," which require clear indications, safe application, trained staff, reassessment guidelines, and use only after the consideration of alternative methods. **(1.5 CE)**

1p	2p	3p	4p	5p	6p
		Emergency Preparedness		Forensic Needs of Survivors with Disabilities	
		SOS: Save Our Skin		Treatment Outcomes Assessment	
		Preventing/Reducing Exposure		Building a Mental Health Model	
		Writing for Publication		Depression in Persons with I/DD	
		Telemedicine Teledentistry		Medical/Dental Procedures and Stabilization Protocols	



Course Descriptions

Tuesday, May 18th

8AM - 9:15AM, General Session 6

Towards a Humanistic Health Care Model: Humanity-Based Clinical Care/Dr. Steve Zelenski Tribute Lecture

Adadot Hayes MD

Healthcare for people with disabilities has often been hampered by social constraints including inclusion, dignity, access, respect and knowledge. These issues have affected not only issues of health, but also quality of life and well-being. These obstacles are often overcome by the people working in this field who have made commitments to this population. This talk outlines some of the problems and solutions in this area while honoring a doctor who struggled and succeeded with these issues, Dr. Steve Zelenski. **(1.25 CE)**

9:30AM - 10:45AM, General Session 7

Understanding Lesch-Nyhan Disease: A Personal Perspective

Stephanie Wincik, RN, CDDN

The hallmark feature of Lesch-Nyhan Syndrome (LNS) is an overwhelming, involuntary compulsion to self-injure. Some individuals may have only mild intellectual disability and are fully aware of their situation, but are powerless to control their own self-damaging behavior. This session will review the genetic basis and pathophysiology of LNS and identify its unique behavioral manifestations. Treatment options will be discussed, including practical information on effective behavior management strategies. A short documentary produced by Bill Melius, a 35-year-old survivor of LNS, will be shown. As we follow Bill through a typical day, we will develop a greater understanding of what it means to live with this syndrome. **(1.25 CE)**

11AM - 12PM, General Session 8

Nurse - Heal Thyself!

Wes Matthias, RPh, CGP, BCPP

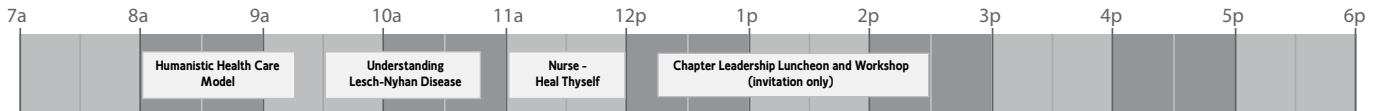
This Session Sponsored by the Northern Illinois DDNA Chapter

The purpose of this presentation is to present the current treatment algorithms for hypertension, diabetes and pre-diabetes, and hyperlipidemia in a humorous and memorable fashion -- to help I/DD nurses to not only help those for whom they care, but to also apply these guidelines to their own lives, as well. Be prepared to laugh!! **(1 CE)**

12:15PM - 2:30PM, Special Session

Chapter Leadership Luncheon and Workshop (invitation only)

DDNA is pleased to invite our current chapter leaders to be our guests at a special recognition and networking luncheon. As a chapter leader, you have taken on the challenge of connecting with and providing support to I/DD nurses in your chapter area. You want to find ways to contribute to your chapter's success, which can include developing and maintaining an informative website, locating and recruiting new members, providing quality education programs for I/DD nurses and the community, encouraging existing members to serve in leadership roles, and nurturing the spirit of providing mutual support. When you arm yourself with new ideas and support, finding ways to grow and vitalize your chapter can be identified and developed. During this luncheon, chapter leaders will have an opportunity to network with one another, share strategies to address common challenges, and identify solutions that will help to strengthen and improve their chapters. DDNA's Board of Directors will share their experiences with their chapters and other information of importance to chapter leaders. Each chapter can send up to two representatives, each of whom must be an elected officer of the chapter. **(2.25 CE)**



Conference Faculty

Jarrett Barnhill, MD, DFAPA, FAACAP

Dr. Barnhill is a Professor and Director of the University of North Carolina's Developmental Neuropharmacology Clinic. He specializes in the diagnosis and pharmacological treatment of autism and other developmental disabilities, and other neuropsychiatric disorders such as Tourette's syndrome and other movement disorders as well as psychiatric problems in patients with epilepsy. He is a consultant in neuropsychiatry at Dorothea Dix Hospital, the Murdoch Center in Butner, NC, the Caswell Center in Kinston, NC, and Residential Services, Inc. in Chapel Hill, NC, as well as for Autism services. He completed a residency in psychiatry, a fellowship in child and adolescent psychiatry, and a fellowship in neuropsychiatry.

Terry Broda, RN, BScN, NP-PHC, CDDN

Ms. Broda is a Nurse Practitioner (NP) consultant in dual diagnosis for two teams in Ottawa, Canada: Solutions-s and the Canadian Mental Health Association. As a nurse and then as an NP she has more than 16 years of experience in I/DD nursing. Her specific interests include genetics, psychiatry, neurology and geriatrics. She was one of the first nurses in Canada to obtain certification from DDNA, and just completed her term as the President of DDNA. A widely recognized conference speaker, she is also on the nursing faculty at John Abbot College and McGill University in Montreal, Canada.

Kathleen A. Brown, RN, CDDN

Ms. Brown started working with individuals with I/DD more than 30 years ago, initially as a Social Worker, then as a Psychiatric Nurse, as well as a Director of Nurses and an Administrator. Currently, she is the Director of Development for Pharmacy Alternatives, which exclusively services persons with I/DD. She started the Northern Illinois DDNA Chapter 15 years ago as its President, and has remained in that position since its inception. Under her guidance the DD nurses of Illinois received the DDNA Network Award in 2007. She has been active politically in Illinois instituting Rule 11.6, which addresses training of direct support personnel to pass medications under RN delegation. She became one of the initial Trainers for the State of Illinois and continues today in that role. She is the current President-Elect on the Board of Directors for National DDNA.

Doreen Canton, BS, RN, CDDN

Ms. Canton, RN, CDDN, has more than 30 years experience in various clinical settings, with the past 14 years devoted to providing services to the I/DD population. She has developed a series of short training videos for consumers and direct care staff on health related topics, including nutrition, exercise and dental care in conjunction with Photon Creative Studios. She wrote and was awarded a grant from the Department of Developmental Services to create a series on Emergency Preparedness for the individuals for whom she provides care and their direct support staff.

Lucien Canton, CEM

Mr. Canton is a consultant specializing in strategic planning for crisis. He is the former Director of Emergency Services for San Francisco, where he coordinated the emergency management program and served as policy advisor to the Mayor on emergency management and homeland security issues. Previously, he served as an Emergency Management Programs Specialist and Chief of the Hazard Mitigation Branch for FEMA Region IX, where he assisted in responding to more than 18 major disasters. He is a Certified Emergency Manager, a Certified Protection Professional, and a Certified Business Continuity Professional. He is also certified as an assessor for the Emergency Management Accreditation Program. He holds a Master of Business Administration in International Management and is the author of "Emergency Management: Concepts and Strategies for Effective Programs" and of numerous articles on emergency management and security topics.

Hank Chambers, MD

Dr. Chambers is a Board Certified Orthopedic Surgeon who specializes in pediatric orthopedic surgery. He is the immediate past President of the Board of Directors for the American Academy for Cerebral Palsy and Developmental Medicine, and is the Medical Director of the Cerebral Palsy Program at Rady Children's Hospital. Dr. Chambers' clinical interests are in cerebral palsy, pediatric sports injuries and pediatric trauma. He has authored numerous publications, abstracts and book chapters, and is recognized in Best Doctors in America.

Tom Cheetham, MD, CCFP

Dr. Cheetham is a Board Certified Family Physician with more than 30 years serving people with I/DD. He has held academic appointments in the Department of Family Medicine of two university schools of medicine and was a member of the Planning Committee for the Colloquium on Primary Health Care for Adults with Developmental Disabilities, which resulted in publication of the Ontario Consensus Guidelines for Primary Health Care of Adults with Developmental Disabilities and its subsequent training program. His clinical experience includes providing primary care in three developmental centers, at a tertiary 24-bed unit in a state psychiatric hospital for adults with a dual diagnosis, and in the community for 15 years in Ontario, Canada. In 2007, he was selected Physician of the Year by the Developmental Disabilities Nurses Association. In 2008, he spent a year as Medical Director at Orange Grove Center, a community agency serving more than 700 individuals with I/DD in Chattanooga, Tennessee. Currently, he is developing a shared care model to increase community capacity to provide health care to individuals with I/DD in Toronto, Canada. He serves on the Board of AADMD and several other professional boards.

Gerri Collins-Bride, RN, MS, ANP

Ms. Collins-Bride is a Clinical Professor and Vice Chair of the Department of Community Health Systems in the University of California San Francisco (UCSF) School of Nursing. She has held a faculty position with the Adult Nurse Practitioner Program and the Advanced Practice Psychiatric Mental Health Nursing Program at UCSF since 1992. For the past 27 years, she has been a primary care provider in the Division of General Internal Medicine at UCSF where she specializes in adults with I/DD. She is a founding member of the Telemedicine Assessment and Consultation Team, a service that provides expert consultation to rural health care providers in Northern California to care for the most medically complex patients with I/DD. She co-chairs the annual CME conference at USCF, Developmental Disabilities: Update for Health Professionals and is a faculty member on the federal Health Resources & Services Administration (HRSA) training grant to develop curriculum to teach medical residents and students about caring for people with I/DD.

Richanne Cunningham, RN, CDDN

Ms. Cunningham has been actively involved in the field of I/DD for 36 years, first as an NSC/QRMP, a Licensed Practical Nurse, and for the past 13 years, as a Registered Nurse. She is certified in I/DD nursing. She works as a Nurse Service Coordinator/QRMP for ARCA in Albuquerque and has been formally recognized by the State of New Mexico as Long Term Care Nurse of the Year. She has acted as a Coordinator and is a Certified Coach for Special Olympics. She has been very active in the New Mexico Chapter, serving as both Secretary and Treasurer. She is the current Secretary on the Board of Directors of National DDNA.

Jack Dillenber, DDS, MPH

Dr. Dillenber currently is the inaugural Dean of A.T. Still University's Arizona School of Dentistry & Oral Health. This is Arizona's first dental school and is pioneering an innovative integrated biomedical curriculum, utilizing technology, and fourth year community-based clinical training to educate the next generation of community minded

general dentists. Included in the innovative clinical education is the Special Care Clinic. Dr. Dillenberg previously has served as the Director of the Arizona Department of Health Services and as the Associate Director for Public Health Programs for the California Department of Health Services. He directed the development of statewide oral health policy and evaluated the operation and effectiveness of California's oral health programs. He also served as the Area Health Officer for the Los Angeles County Department of Health Services. Dr. Dillenberg is recognized at the local, state, national and international levels as an expert in the area of public health leadership, health program development, social marketing and oral health issues. Dr. Dillenberg is a member of the Special Care Dental Association.

Steven M. Eidelman, MBA, MSW

Mr. Eidelman is the University of Delaware's H. Rodney Sharp Professor of Human Services Policy and Leadership. He holds joint faculty appointments in the School of Urban Affairs and Public Policy and the Department of Individual and Family Studies and is a Senior Fellow in the Center for Disabilities Studies. He is the former Executive Director of the Joseph P. Kennedy Jr. Foundation, leading the organization to implement innovative projects, programs and cutting-edge policies. Prior to his appointment with the University of Delaware, he was the Executive Director of The Arc of the United States, an advocacy group for people with cognitive disabilities and their families, which has more than 900 state and local chapters and 100,000 members. He also served as Deputy Secretary for Mental Retardation in the Pennsylvania Department of Public Welfare.

Leonard S. Fischer, MD

Dr. Fischer is a Board Certified Internist and Gastroenterologist who has been practicing as a consultant in a group setting in Northern Virginia since 1986. He currently performs approximately 1200 colonoscopies annually, and has been elected to Fellowship in the American Gastroenterological Association. For the past 16 years, he has been a consultant to the Northern Virginia Training Center, a residential facility for adults with I/DD, where he has a monthly clinic. For the past 10 years, Dr. Fischer has been a consultant to the Central Virginia Training Center in Lynchburg, Virginia, where he attends annually.

Ginny Focht-New, PhD, PMH-CNS, BC, CDDN

Dr. Focht-New has worked in I/DD nursing for 35 years, beginning as direct care staff in a developmental center in Pennsylvania. She then worked for a large community-based residential agency as a staff nurse, nursing coordinator, and division director. She was DON for the Health Care Quality Unit in SE region of PA. Currently, she is a consultant in several states assisting agencies to address the challenging behavior of individuals through understanding and compassion. In addition, she is a therapist, primarily for individuals with I/DD, focusing on traumatic experiences in this population using EMDR. In 1998, she received the Lillian Brunner Sholtis award from the University of Pennsylvania's nursing alumni association for innovative practice. She is an Adjunct Professor at Widener University, teaching research and assessment and diagnosis of mental health conditions. She has worked as a legal consultant and has numerous publications in a variety of journals.

Janean Fossum, BSN, RN, CDDN

Ms. Fossum is a Registered Nurse who works in Community Health Nursing serving individuals with mental and physical challenges, as well as clients institutionalized or victimized who exhibit severe PTSD symptoms. She also lectures about topics such as abuse and neglect recognition, the role of forensic nurses, and behavior management for vulnerable populations. She is the Managing Editor of "On The Edge," the International Association of Forensic Nurses Newsletter and is a Forensic Nurse Consultant.

Robert Gettings, MPA

The former, long-time Executive Director of the National Association of State Directors of Developmental Disabilities Services, Mr. Gettings is widely recognized as a leading expert on national disability policy. Over the past four decades, he has been involved in shaping federal and state laws affecting persons with I/DD. In the area of Medicaid policy, he played a leading role in the enactment and subsequent modifications in statutes and regulations governing the ICF/MR coverage option, the home and community-based waiver authority, preadmission screening and annual review requirements and many other related areas of federal-state Medicaid policy. Over the past year, he has closely tracked the development of national health reform proposals and commented on the legislation's implications for the I/DD population in a series of policy bulletins issued by the National Leadership Consortium on Developmental Disabilities.

J. Carolyn Graff, PhD, RN

Dr. Graff is a member of the Alliance of Nurses for Healthy Environments, Research Group and the National Association for the Dually Diagnosed, Mental Health/ Environmental Health Work Group. She served on the American Association on Intellectual and Developmental Disabilities' Action Group on Environmental Disasters and the Environmental Health Initiative's Education, Outreach, and Training Workgroup. She represented DDNA at the Environmental Health and Nursing Unity Meeting sponsored by the University of Maryland's Environmental Health Education Center. With years of experience in the field of intellectual and developmental disabilities, she co-authored an article on in-home toxic chemical exposures and children with I/DD. She has been an invited speaker on environmental health risks for persons with I/DD at national and international meetings.

Adadot Hayes, MD

Dr. Hayes is Board Certified in Neurodevelopmental Disabilities with 30 years of practice exclusively with the I/DD population in private practice, at the university (University of Pennsylvania) level and in the government (Department of Intellectual Disabilities, Tennessee).

Sherrill Hayter, RN, CDDN

Ms. Hayter has worked in the specialty of I/DD nursing for 23 years. She is currently the Metro North area office Nurse Consultant for the Department of Developmental Disabilities in Massachusetts. She is the 2005 recipient of the Manuel Carballo Governor's Award and the 2006 recipient of the ARC's Norma Howland Human Rights Award for her advocacy and work in making end-of-life services available to individuals with I/DD.

Lisa Itaya, DDS, FAGD

Dr. Itaya is a graduate of the Arthur A. Dugoni School of Dentistry completing a two-year Advanced Education in General Dentistry Residency. She has been teaching post doctoral and predoctoral dental students and residents for more than 10 ten years in the area of advanced dental care and patients with special health care needs. Dr. Itaya has been the dental representative for the TACT (Telemedicine Assessment and Consultation Team) for many years and is experienced in video conferencing from the dental education arena. She currently is the director of the Emergency Department at the Arthur A. Dugoni School of Dentistry and completing her Doctorate in Professional Education and Leadership.

George Jesien, PhD

Dr. Jesien is the Executive Director of the Association of University Centers on Disability (www.aucd.org). His experience includes extensive administrative and supervisory responsibility, most recently as the Executive Director of the Joseph P. Kennedy, Jr. Foundation since 1997. In this role, he directed and managed Foundation activities, including national grants management, the public policy fellowship program, the associate trustee program, and fiscal management of an annual budget of approximately \$2.6

Conference Faculty

million. He served as a Principal Investigator for a series of federal, state, and locally funded projects in personnel preparation, research, materials development, outreach, direct services, and information dissemination via the Internet at the Waisman Center at the University of Wisconsin-Madison between 1989 and 1997. In addition, he was awarded a one-year Kennedy Foundation Public Policy Fellowship in 1994 to work with the Senate Subcommittee on Disability Policy with Senator Tom Harkin of Iowa.

Seth Keller, MD

Dr. Keller is a Developmental Neurologist with many years of experience in treating adults with I/DD. He provides consultative services for both community and state facilities. He is a member of the Mainstreaming Medical Care Advisory Board of the ARC of New Jersey and the President of AADM. He is an active educator on various neurologic developmental disabilities topics.

Gloria Krahn, PhD, MPH

Dr. Krahn, Director of the Division of Human Development and Disability at the National Center on Birth Defects and Developmental Disabilities (NCBDDD - website www.cdc.gov/ncbddd/index.html), joined the CDC after 25 years as an academic clinician, researcher, teacher and administrator. She is a national and international expert in the field of disability and public health. Her publications and lectures have bridged the fields of child development, developmental disabilities, health status measurement and health promotion among adults with disabilities. Her research has been funded by the NIH, the U.S. Department of Education, the Maternal and Child Health Bureau at HRSA, and the CDC. She is the author of numerous publications related to disability and child development, and was co-editor of the first major textbook on Disability and Public Health. She served as President of the Association of University Centers on Disabilities (AUCD), Chair of the Disability Section of the American Public Health Association, on the executive committee of the National Association of Rehabilitation Research and Training Centers and in the Healthy People 2010 and 2020 Disabilities work groups.

Wes Matthias, RPh, CGP, BCPP

Wes Matthias has worked in the field of geriatrics and developmental disabilities for the last 18 years. He is one of the few pharmacists to be certified in both geriatric pharmacy and psychiatric pharmacy. Wes has presented to multiple groups in the past, but prefers to present to DD nurses as their passion exceeds that of other groups. He also serves on the Board of Directors of multiple DDNA state groups.

Phillip May, MD

Dr. Phillip Mays is Clinical Associate Professor of Medicine at UMDNJ/RWJ Medical School (New Brunswick, NJ) and Assistant Medical Director at the Hunterdon Developmental Center in Clinton, NJ. He has 26 years of experience as a teacher of medical students and residents, as well as a Primary Care Physician for adults with I/DD. He is a Past President of AADM.

Robin May, RN, MSN, ANP-C, CDDN

Robin May has worked in I/DD nursing for more than 26 years. She currently is the Director of Nursing of a large state-operated intermediate care facility in northern New Jersey and is the Nurse Consultant for several agencies that provide consultation for complex health conditions that occur in persons with I/DD. Previously, she was Health Clinic Coordinator for the Robert Wood Johnson Medical Program, which provides primary and consultative health services for adults with I/DD New Jersey. She has provided services to community agencies that serve persons with developmental disabilities and was previously the New Jersey Coordinator for the Philip Rance Foundation for Septic-Optic Dysplasia. She is a certified member of DDNA and the American Academy of Nurse Practitioners.

Jean McMaster, MFT

Ms. McMaster is a Licensed Marital and Family Therapist who has provided individual and group psychotherapy for people with I/DD for 5 years through Golden Gate Regional Center and San Mateo County Behavioral Health and Recovery Services in San Mateo.

Shirley McMillan, RN, BScN, MN, CDDN

Ms. McMillan is an Advanced Practice Nurse in the Mental Health Program at Surrey Place Centre, a large I/DD community agency in Toronto, Canada. She holds a clinical appointment in the Faculty of Nursing at the University of Toronto. She was the first nurse outside the U.S., and the first from Canada, to be certified as a CDDN. Her nursing practice for the last 25 years has focused on clinical work, research and education in the field of I/DD through the lifespan. She was a member of the Planning Committee for the Colloquium on Primary Health Care for Adults with Developmental Disabilities, which resulted in publication of the Consensus Guidelines for Primary Health Care of Adults with Developmental Disabilities and the subsequent training program for health care practitioners. She is enrolled in the PhD Program in Learning Disability (Developmental Disability) Nursing at the University of Glamorgan in Wales, UK.

S. Diane Moore, BSN, RN, CDDN

Ms. Moore is the co-owner of Innovative Outcomes, Inc., a company that provides a comprehensive array of services to individuals with I/DD in residential and natural home settings. A Registered Nurse for over 25 years, she has worked in I/DD nursing for more than 20 years. She has served on the Board of Directors for the Developmental Disabilities Nurses Association since January 2002, and is the current Board President. She also co-founded the DDNA North Texas network, serving as the founding President for six years. A frequent speaker at local, regional and national forums, she advances the discussion of common health issues facing persons with I/DD and the practice concerns of nurses who work in the specialty of I/DD nursing. Her areas of interest include developing successful intervention plans for persons with challenging behaviors, improving medication management strategies for persons with I/DD, and creating quality health education programs for direct support staff.

Celia Moreno, MD

Dr. Moreno is the Cofounder of Puente Clinic San Mateo County Behavioral Health and has been Recovery Services Medical Director for over eight years.

Sharon Oxx, RN, CDDN

Ms. Oxx is the Director of Health Services for the Office of Quality Management in the Massachusetts Department of Mental Retardation. A Registered Nurse for 33 years, she has worked in I/DD nursing for 22 years, focusing on the development and support of healthcare and residential services for individuals living in the community. She was instrumental in the creation and implementation of a medication administration curriculum for unlicensed direct support personnel who work in DMR programs. She was the Founding President of the DDNA, and serves on the Board of Directors for the online International Journal of Nursing in Intellectual and Developmental Disability.

Rita Pobanz, MSN, RN

Ms. Pobanz has a diverse nursing history of direct patient care, administration, staff development, clinical systems re-design, and regulatory compliance. Currently, she develops online CE courses in I/DD nursing. She has functioned as a consultant to ICF-MRs in both nursing and professional standards of practice and in quality improvement. She is a recognized team facilitator, change agent and speaker at state, national and international seminars and conferences. She also has a background in strategic project management, team building and leadership development. She has served on the Ohio Board of Nursing

Conference Faculty

and participated in several committees for the NCSBN. Additionally, she has served as volunteer faculty at the University of Cincinnati. Her clinical focus for the last 10 years has been the development of organizational systems to ensure the provision of appropriate supports and services for persons with I/DD.

James Powell, MD

Dr. Powell is a Board Certified Internist practicing in Long Island, NY. He is the Medical Director of the Developmental Disabilities Institute and Opti-Healthcare. He provides primary care and oversees the operations of their four clinics. In addition, he is a Clinical Instructor for the Department of Medicine at Stony Brook University School of Medicine and a Board Member of AADMD.

Rick Rader, MD

Dr. Rader is the Director of the Morton J. Kent Habilitation, Orange Grove Center, Chattanooga, Tennessee, a community-based agency that provides services for people with complex I/DD. He is a past President of the American Academy of Developmental Medicine and Dentistry and Editor-in-Chief of *Exceptional Parent Magazine*. He has made more than 300 presentations to professional associations, Congress, parent groups, research agencies, and universities throughout the US, Canada, Europe, and the Middle East. He has presented on medical stabilization at AAIDD and the American College of Legal Medicine.

Denise Schuffman, RN, RD, LD

Ms. Schuffman, a Registered Nurse and Registered Dietitian, has more than 20 years of experience dealing with the nutritional and nursing needs of persons with I/DD. She completed an internship at the University of Tennessee on the nutritional needs of people with I/DD. She has lectured to many professional groups regarding her specific area of expertise, which is choking prevention and altered consistency diets.

Nancy Thaler, MS, HOS

Ms. Thaler is the Executive Director of NASDDDS (www.nasddd.org), which provides member state agencies with analyses of federal statutory and regulatory policies that affect people with disabilities; disseminates information on state-of-the-art programs and service delivery practices; provides technical assistance and support to member states; and offers a forum for the development of state and national policy initiatives. She served as Pennsylvania's Deputy Secretary for Mental Retardation from 1993-2003, managing a system that served over 80,000 children and adults. She also worked for the Federal Center for Medicare and Medicaid Services (CMS) from 2003-2006 and was responsible for the quality improvement strategy for the Federal Medicaid Home and Community-Based Waiver Program. She is the parent of an adult son with cognitive disabilities.

H. Barry Waldman, DDS, MPH, PhD

Dr. Waldman is a Distinguished Teaching Professor of the State University of New York. He was the first faculty member of the School of Dental Medicine at Stony Brook, where he has served for more than 39 in numerous roles, including Department Chair and Assistant Dean, as well as participating in teaching programs throughout the Health Sciences Center and the undergraduate college. He has published 900 monographs and articles in international, national and regional publications evaluating health delivery and social issues, including manpower, health economics, delivery modalities and quality assessment; with particular emphasis in the issues facing the delivery of health services to children and adults with special health care needs.

Jennifer R. Wilhelmy, RN, DCN, CNP

Ms. Wilhelmy is an Adult Nurse Practitioner certified in wound care who works in specialty care, treating patients with childhood onset disabilities. She has also been working with group home residents for more than 15 years. Her clinical practice includes wound care,

baclofen pump management, and adult general medicine inpatient care. She has dedicated her career to promoting quality health care for individuals with I/DD.

Michael Wilkins, MD

Dr. Wilkins was a physician at Willowbrook in the 1970s. He was involved in organizing a group of family members of the "inmates", professional and nonprofessional employees, and community members. They pressed for change. Two of the members of the group--Dr. Wilkins and a social worker--were fired after failing to obey the director's order to stop attending the meetings of the group. The person who handed Dr. Wilkins his pink slip neglected to take his key, which opened every door at Willowbrook. Dr. Wilkins called Geraldo Rivera, who at that time was a local newsman in New York, and they entered the institution without permission using the key to gain entrance to multiple buildings, filming conditions on the back wards. They returned more than ten times, filming abysmal conditions in multiple buildings to emphasize the magnitude of the problem and to erase any doubt that the conditions were being accurately presented. Geraldo Rivera produced an award-winning documentary emphasizing the benefits of community services over institutions, and Dr. Wilkins appeared with him on the Dick Cavett show. The attitudes of the citizens of New York and elsewhere were changed after they saw the cruel conditions and the alternative of community and family services.

Michael R. Willis, RN, MBA, JD, LL.M

Mr. Willis has experience as a community-based psychiatric nurse consultant, a nursing supervisor in a large I/DD facility, a home care nurse, a nursing home charge nurse, a hospital association executive responsible for handling nursing regulatory issues, and a trial attorney defending medical malpractice claims and long term care facility negligence suits. He is a Licensed Health Care Risk Manager, has an MBA in Health Systems Administration, and a Master of Laws LL.M degree in Elder Law, including disability law.

Stephanie Wincik, RN, CDDN

Ms. Wincik is the Associate Director of Nursing/Health Services at Erie Homes for Children and Adults, a residential facility serving medically fragile individuals with I/DD throughout the lifespan. A Registered Nurse since 1977, she has worked in I/DD nursing for 27 years, specializing in health support for individuals with I/DD living in community homes, as well as clinical supervision of nursing staff. Since becoming a Family Living provider for a young woman with Down syndrome, Stephanie has developed an even greater respect for individuals with I/DD and their ability to enrich the lives of those around them.

Allen Wong, MD

Dr. Wong has extensive experience in hospital dentistry for over 20 years, providing care and teaching dental residents and dental students. He is an Assistant Professor at the University of the Pacific Arthur A. Dugoni School of Dentistry where he directs the Hospital Dentistry Program and teaches in the Cariology course. Dr. Wong has been a strong advocate for improving access to care and caries prevention for the underserved and is an active volunteer and trainer for Special Olympics Special Smiles program both nationally and internationally. He serves on the Boards of AADMD and the American Association of Hospital Dentists.

Nanette Wrobel, BS, RPH

Ms. Wrobel has worked as a consultant pharmacist to facilities that care for persons with I/DD for more than 20 years. She is currently the Director of Development for Pharmacy Alternatives and owns her own consulting firm, The Pharmaceutical Advisor. Because her specialty is psychiatric medications, she serves on many committees with psychiatrists to help facilities understand when and if the use of behavioral medications is appropriate. She is a renowned speaker both nationally and internationally and has spoken at many DDNA national and chapter/network conferences.

DDNA/AADMD Conference Registration Form (part 1 of 2)

Print clearly on both sides of this form to complete the registration process. Fill in every field so that we may have the correct information for your registration materials, name badge, and awarding of CE.

First/Last Name/Credentials: _____

Preferred First Name (for your name badge): _____

Email Address: _____

Nursing/Medical License

Number: _____

State: _____

Work Mailing Address

Employer: _____

Address: _____

City/State/Zip/Country: _____

DDNA/AADMD Membership

Membership No: _____

Expiration Date: _____

Home Phone: _____

Work Phone: _____

Home Mailing Address

Address: _____

City/State/Zip/Country: _____

Please use my (circle one):

Work Mailing Address

Home Mailing Address

Breakout Session Preferences - Monday Only

Breakout Sessions will be held on Monday, May 17th. Read the Breakout Session descriptions in this brochure before marking your selections (one in each row).

9:30am - 10:30am	<input type="checkbox"/> 1A	<input type="checkbox"/> 1B	<input type="checkbox"/> 1C	<input type="checkbox"/> 1D	<input type="checkbox"/> 1E
11am - 12:30pm	<input type="checkbox"/> 2A	<input type="checkbox"/> 2B	<input type="checkbox"/> 2C	<input type="checkbox"/> 2D	<input type="checkbox"/> 2E
2:30pm - 3:30pm	<input type="checkbox"/> 3A	<input type="checkbox"/> 3B	<input type="checkbox"/> 3C	<input type="checkbox"/> 3D	<input type="checkbox"/> 3E
4pm - 5:30pm	<input type="checkbox"/> 4A	<input type="checkbox"/> 4B	<input type="checkbox"/> 4C	<input type="checkbox"/> 4D	<input type="checkbox"/> 4E

For Current Chapter Officers:

I am a Chapter officer and want to attend the Leadership Luncheon and Workshop on Tuesday, May 18th: **Yes** **No**

Conference Manual Preference (please indicate now)

Printed manuals will not be distributed at the conference. Flash drives and CD will be available free at the conference if you **pre-order with registration**. You may print out a free manual from the DDNA website beginning April 6th. If you prefer a bound manual, you may purchase one from the printer beginning April 6th. Visit www.ddna.org/conference/manual for details.

- I will purchase my manual directly from printer prior to the conference (\$25, payable to the printer) (allow 3 weeks for delivery)
- I will print my manual free from website (beginning April 6th)
- Please have a manual on a flash drive available for me at the conference.
- Please have a manual on a CD available for me at the conference.

Need A Registration Form or Extra Registration Forms?

Has someone already used the registration form in this conference brochure?

Do you need multiple registration forms?

No problem . . . DDNA can email registration forms to you.

For additional conference registration forms, please send your request to admin@ddna.org or call 800-888-6733.

If you are a physician or dentist, please email your request to matt.holder@aadmd.org.

The Developmental Disabilities Nurses Association (DDNA) is a nursing specialty organization that has been committed to advocacy, education, and care since 1992 for nurses who provide services to persons with developmental disabilities. More than 1,700 DD nurses, associate members, and students nurses have united to promote national recognition and certification of this important, high-skilled area of nursing practice.

DDNA

Developmental Disabilities Nurses Association

"Networking to care, advocate, and educate"



The mission of the American Academy of Developmental Medicine and Dentistry (AADMD) is to improve the quality of healthcare available to people with neurodevelopmental disorders and intellectual disabilities (ND/ID). Recognizing that systemic healthcare improvement requires interdisciplinary cooperation, the Academy encourages its members to be proactive leaders in areas of patient care, teaching, research and advocacy. Since 2002, the AADMD has played an integral role in the reform of curriculum and accreditation standards in medical and dental education.



How to get there...

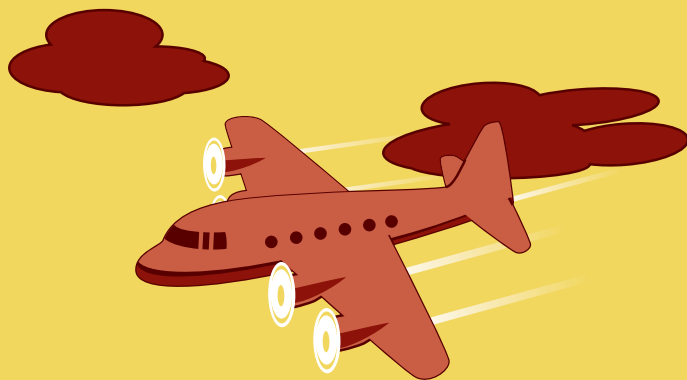
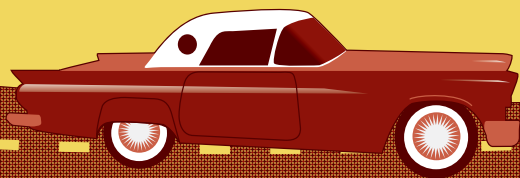
By Car:

Northbound 395: Take exit 66 for Mill St. Continue straight through the Mill Street intersection to the South entrance.

Southbound 395: Take exit 67 toward Glendale Ave. Turn left at E 2nd St. Take the next right into the North entrance.

Eastbound I-80: Take exit 15 to merge onto US-395 S toward Carson City. Take exit 67 toward Glendale Ave. Turn left at E 2nd St. Take the next right into the North entrance.

Westbound I-80: Exit onto US-395 S. Take exit 66 for Mill St. Turn left on Mill St., then left at the stop light to enter the South entrance.



By Air:

Fly into the Reno-Tahoe Airport.
For flights, visit www.renoairport.com

Early Registration ends April 10, 2010
Register online at www.ddna.org/pages/conference

DDNA

P.O. Box 536489
Orlando, FL 32853-6489

